



GMT MONTHLY MEMBERSHIP PROGRESS REPORT

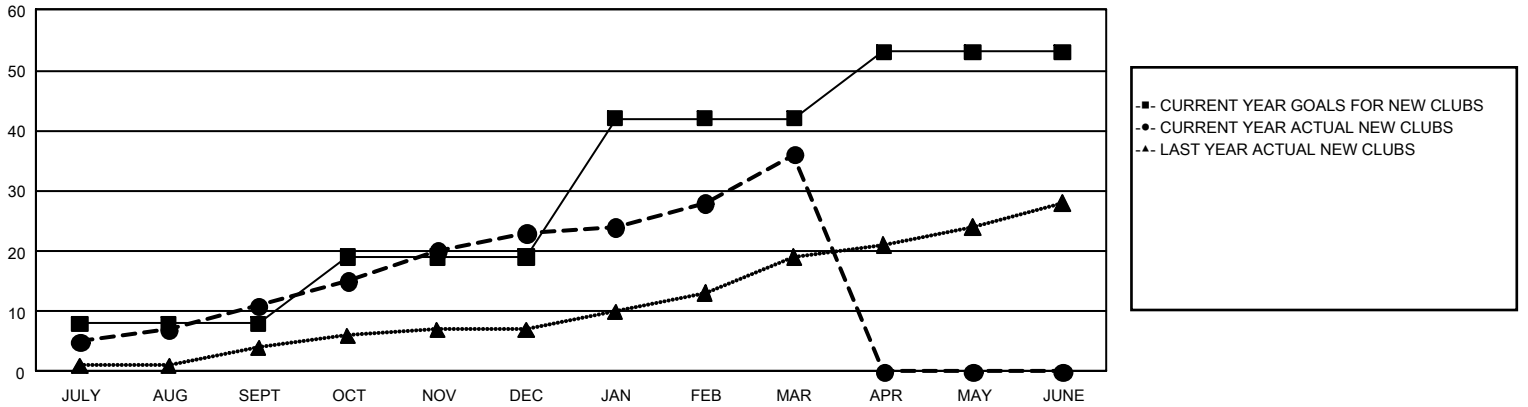
GAT Constitutional Area 5 - Japan

Results as of: 3/31/2026

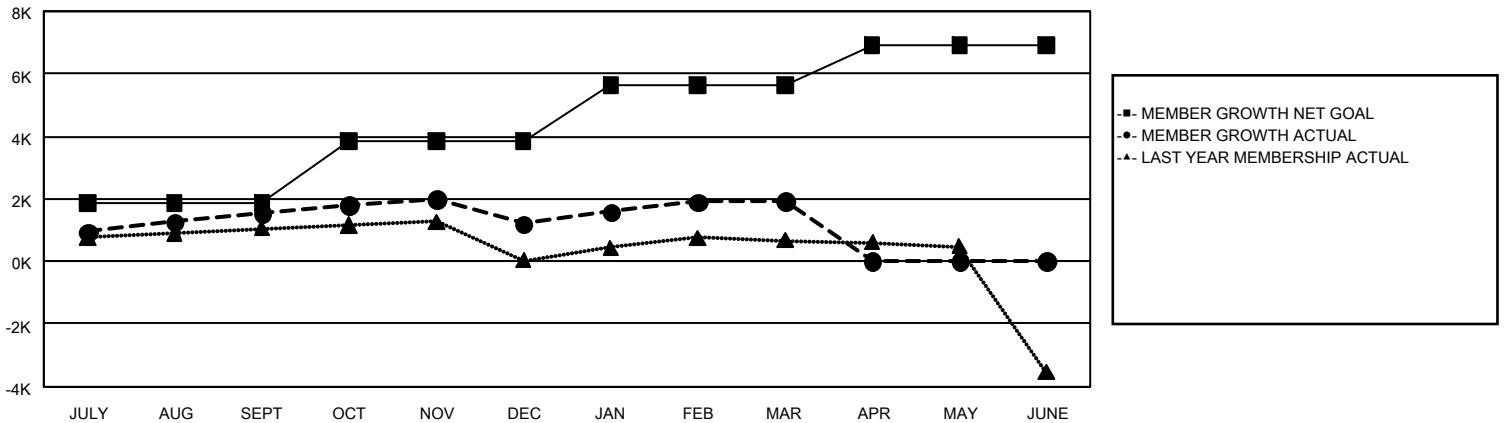
REPORT DOES NOT INCLUDE CLUBS IN UNDISTRICTED AREAS.

Clubs				Members			
RESULTS FOR 2025-2026				RESULTS FOR 2025-2026			
QUARTER	NEW CLUB GOAL	NEW CLUBS	DROPPED CLUBS	QUARTER	MEMBER GROWTH NET GOAL	MEMBER GROWTH ACTUAL	DROPPED MEMBERS ACTUAL (including transfers)
JULY/AUG/SEPT	8	11	4	JULY/AUG/SEPT	1,850	3,299	1,493
OCT/NOV/DEC	11	12	8	OCT/NOV/DEC	1,994	1,596	1,892
JAN/FEB/MAR	23	13	4	JAN/FEB/MAR	1,787	2,137	1,295
APR/MAY/JUNE	11	0	0	APR/MAY/JUNE	1,271	0	0

GOALS AND ACTUAL NEW CLUBS CUMULATIVE



GOALS AND ACTUAL MEMBERS CUMULATIVE



DROPPED CLUBS: 16	1,759 CLUBS OF 2,687 ADDED 1 OR MORE NEW MEMBERS	<u>GENDER DISTRIBUTION</u>	
<u>DROPPED MEMBERS</u>		MALE	70,913 (77.03%)
DECEASED	510	FEMALE	21,110 (22.93%)
CLUB CANCELLED	71	TOTAL FAMILY UNIT MEMBERS	
OTHER	4,092	24,635	
TOTAL	4,673	FAMILY MEMBERS PAYING HALF DUES	
		13,698	

[CLICK HERE FOR CUMULATIVE MEMBERSHIP DATA](#)